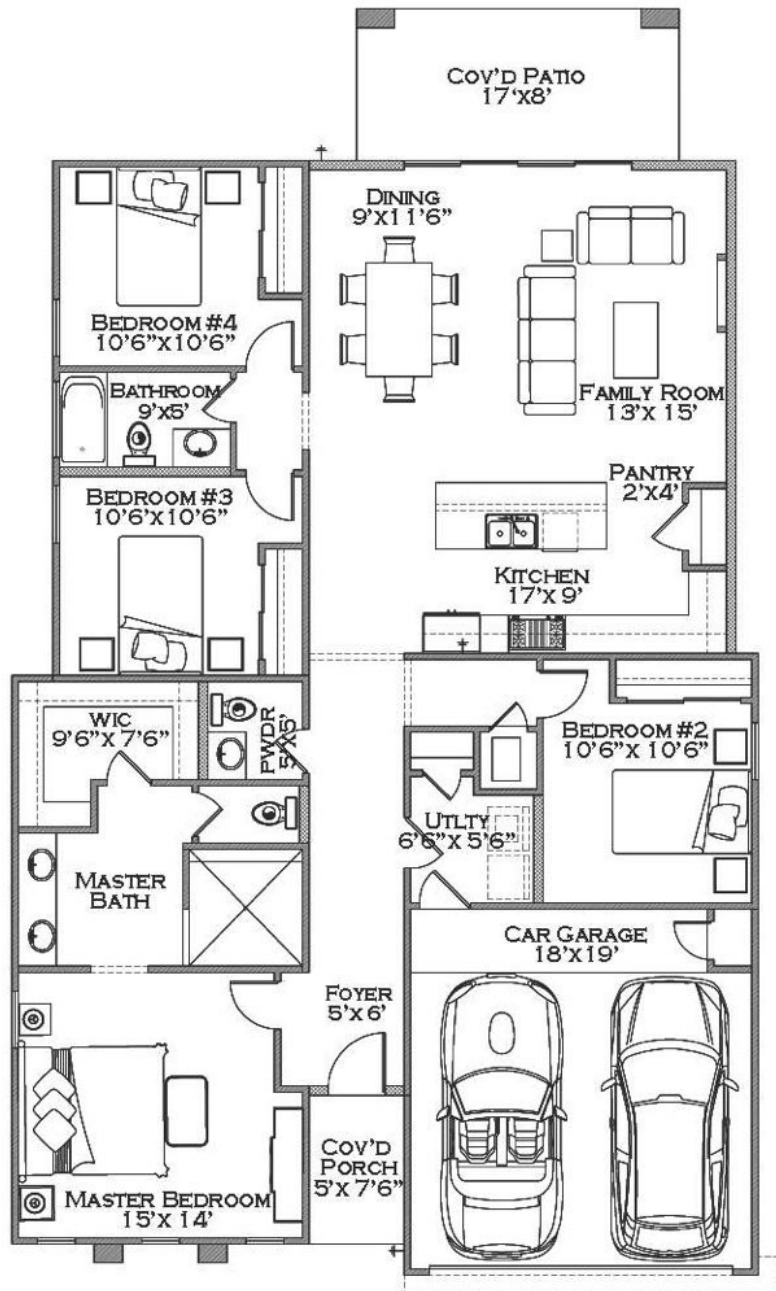





Plan No. 1794

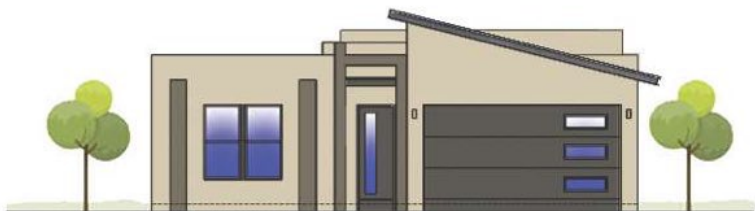


FLOOR PLAN

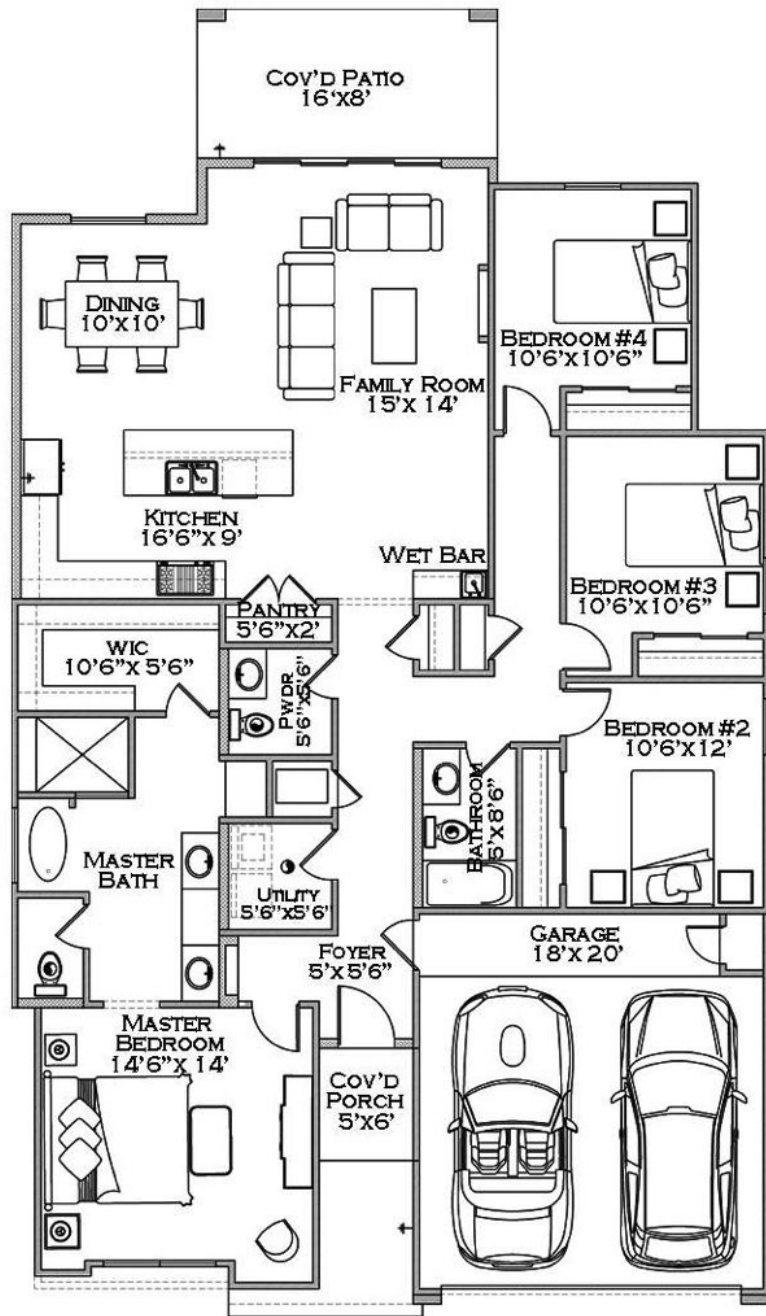
SPECS

1794 TOTAL SQ. FT

-  4 BED
-  2 1/2 BATH
-  2 CAR GARAGE






Plan No. 1868



FLOOR PLAN

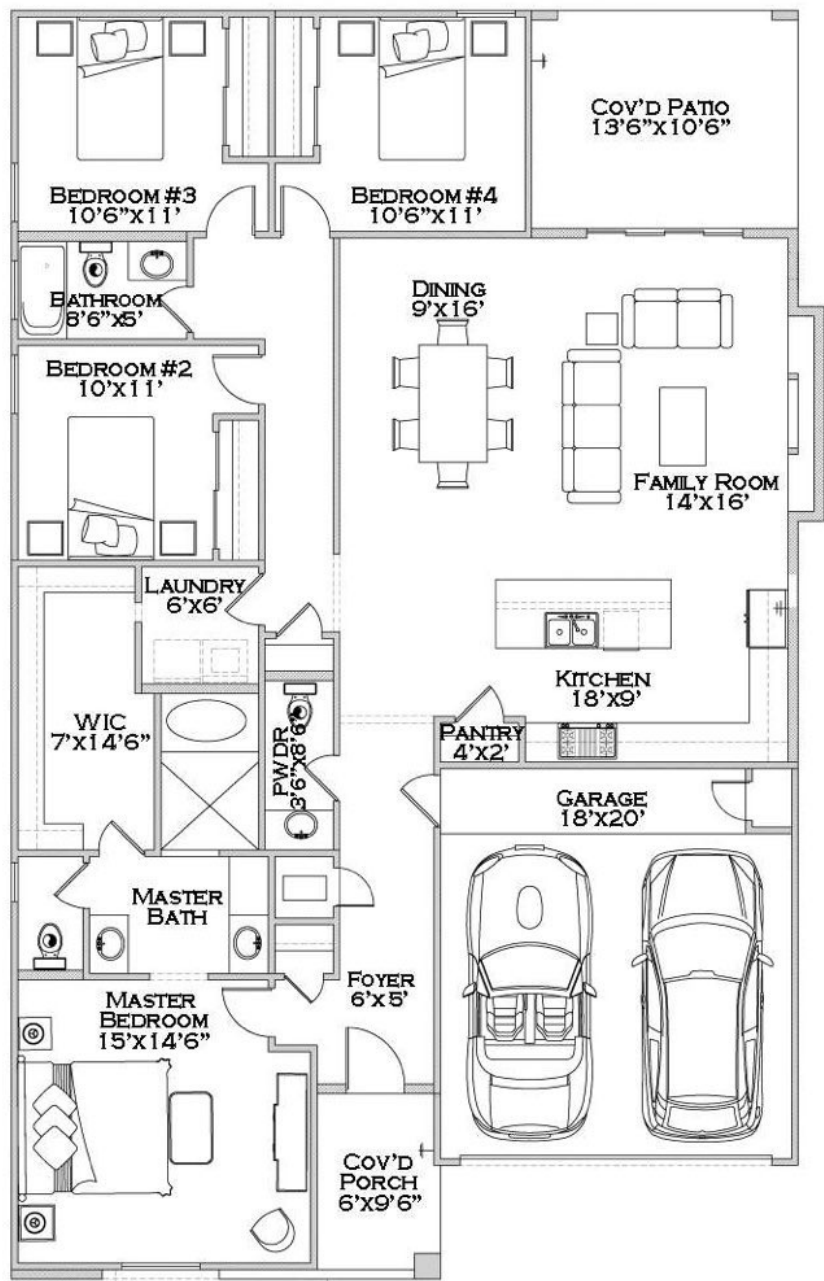
SPECS

1868 TOTAL SQ. FT

-  4 BED
-  2 1/2 BATH
-  2 CAR GARAGE






Plan No. 1936



FLOOR PLAN

SPECS

1936 TOTAL SQ. FT

-  3 BED
-  2 1/2 BATH
-  2 CAR GARAGE



*SIZE OF ROOMS ARE APPROXIMATES

**ELEVATIONS FOR ILLUSTRATION PURPOSES ONLY

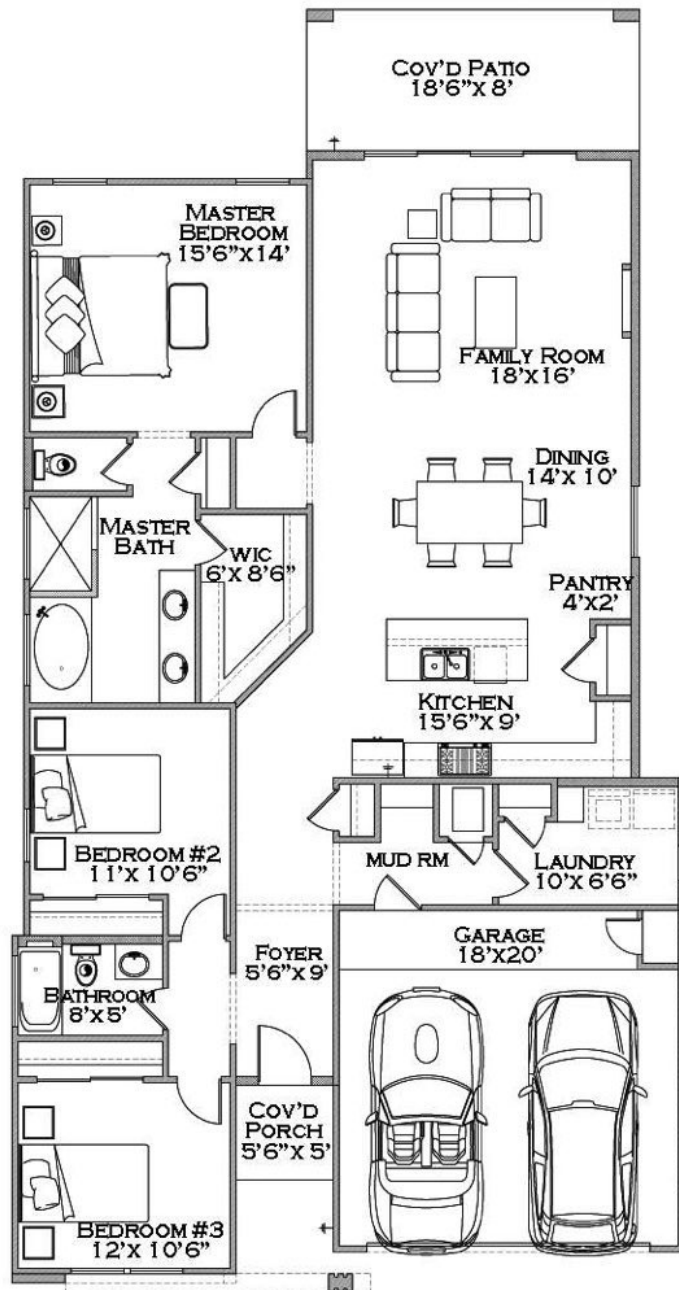
*** PLANS, SPECIFICATIONS AND TERMS SUBJECT TO CHANGE WITHOUT NOTICE



BELLA HOMES

Live Beautifully



Plan No. 1809



FLOOR PLAN

SPECS

1809 TOTAL SQ. FT

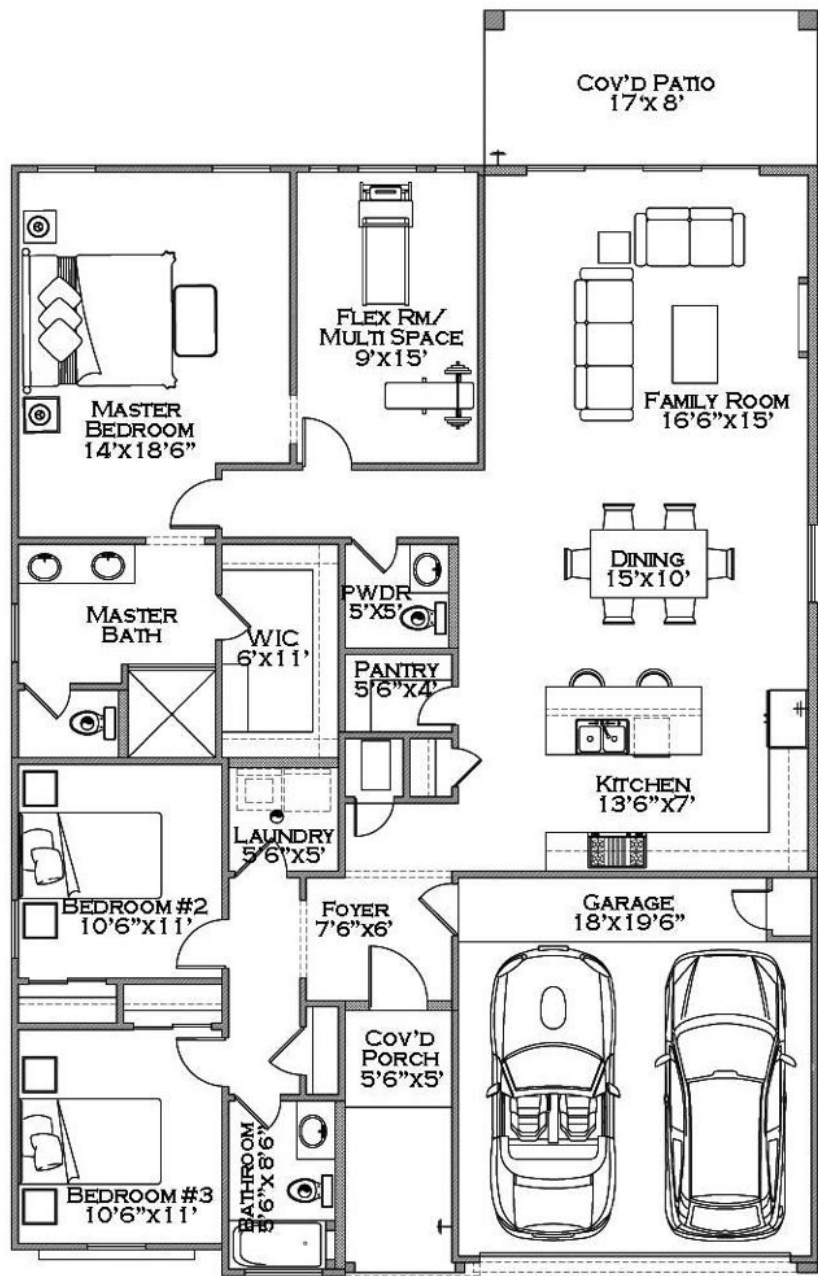
-  3 BED
-  2 BATH
-  2 CAR GARAGE




BELLA HOMES
Live Beautifully

*SIZE OF ROOMS ARE APPROXIMATES
 **ELEVATIONS FOR ILLUSTRATION PURPOSES ONLY
 *** PLANS, SPECIFICATIONS AND TERMS SUBJECT TO CHANGE WITHOUT NOTICE

Plan No. 1899



FLOOR PLAN

SPECS

1899 TOTAL SQ. FT

-  3 BED
-  FLEX RM
-  2 1/2 BATH
-  2 CAR GARAGE



BELLA HOMES

Live Beautifully

*SIZE OF ROOMS ARE APPROXIMATES
 **ELEVATIONS FOR ILLUSTRATION PURPOSES ONLY
 *** PLANS, SPECIFICATIONS AND TERMS SUBJECT TO CHANGE WITHOUT NOTICE