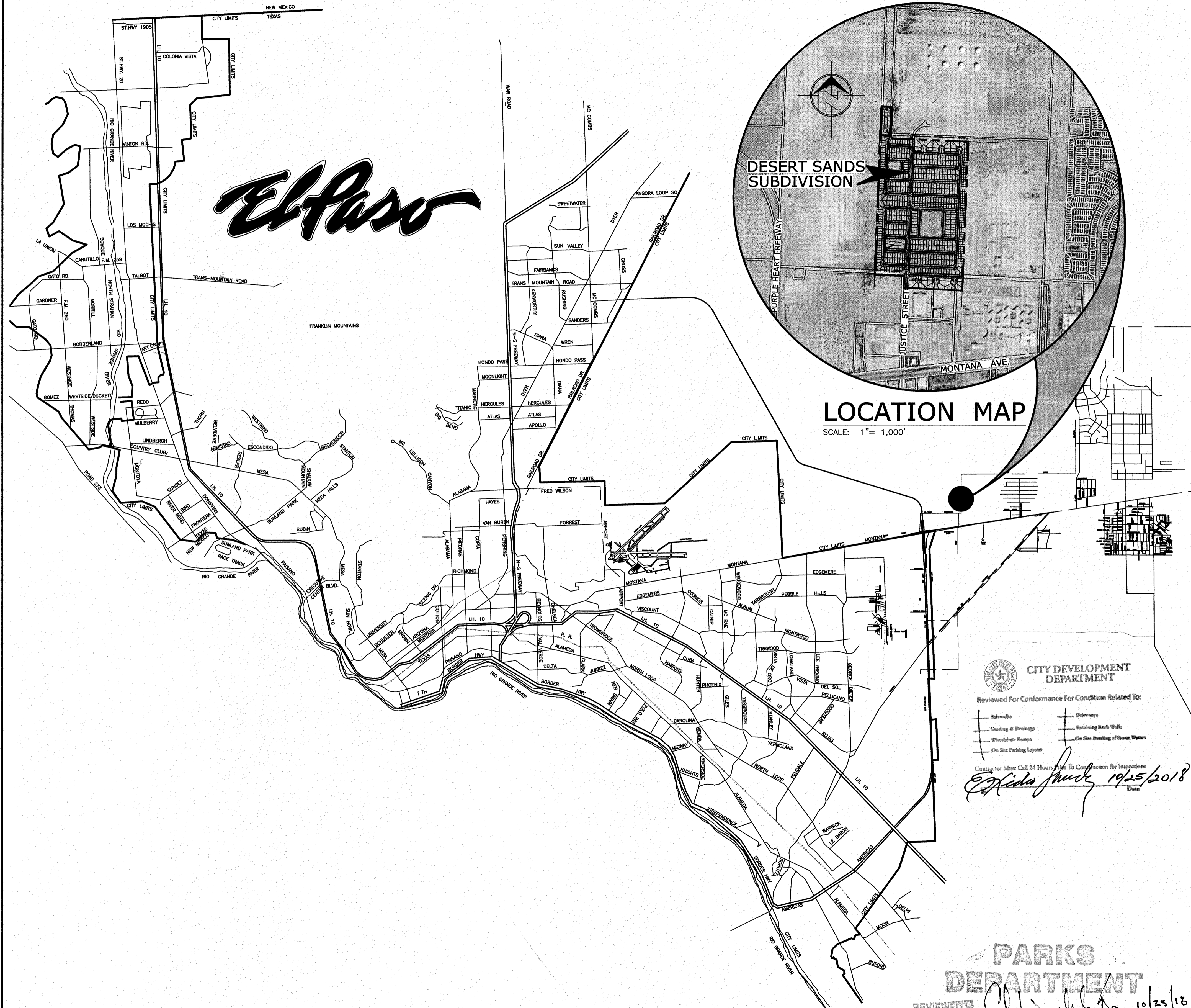


# DESERT SANDS SUBDIVISION

## STREET IMPROVEMENT PLANS

## INDEX OF SHEETS

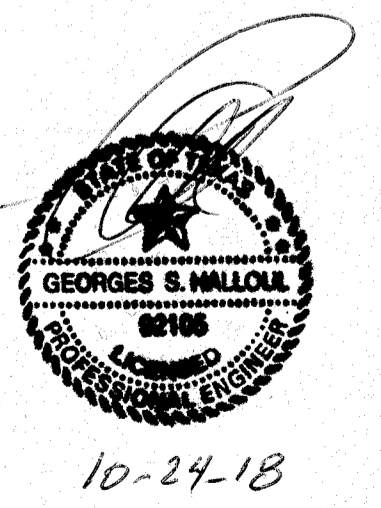


C-00.00	COVER SHEET
C-00.01-C-00.04	SUBDIVISION PLATS
C-01.00	GRADING PLAN (OVERALL)
C-01.01-C-01.05	GRADING PLANS (ENLARGED)
C-01.06	ROCKWALL CONSTRUCTION
C-01.07-C-01.08	GRADING SECTIONS
C-02.00	DRAINAGE PLAN (OVERALL)
C-02.01-C-02.02	DRAINAGE PLANS (ENLARGED)
C-02.03-C-02.04	RETENTION POND DETAILS
C-02.05	HEADWALL DETAILS
C-02.07-C-02.09	STORM DRAIN PROFILES
C-02.10-C-02.11	INLET AND MANHOLE DETAILS
C-02.12	GATE DETAILS
C-03.00-C-03.01	DESERT BLUFF DR. PLAN AND PROFILES
C-03.02	DESERT CLIFF CT. PLAN AND PROFILES
C-03.03	DESERT DAZE PL. PLAN AND PROFILE
C-03.04-C-03.05	DESERT DUNES DR. PLAN AND PROFILES
C-03.06-C-03.07	DESERT DOVE AVE. PLAN AND PROFILES
C-03.08-C-03.09	DESERT FOX AVE. PLAN AND PROFILE
C-03.10-C-03.11	DESERT HAWK AVE. PLAN AND PROFILE
C-03.12-C-03.13	DESERT HEIGHTS CT. PLAN AND PROFILES
C-03.14-C-03.16	DESERT NOMAD DR. PLAN AND PROFILE
C-03.17	DESERT OWL PL. PLAN AND PROFILES
C-03.18-C-03.19	DESERT PALMS AVE. PLAN AND PROFILES
C-03.20	DESERT PARK PL. PLAN AND PROFILE
C-03.21-C-03.22	DESERT PATH CT. PLAN AND PROFILES
C-03.23	DESERT PEACE CT. PLAN AND PROFILES
C-03.24-C-03.25	DESERT PINE AVE. PLAN AND PROFILES
C-03.26	DESERT SEA CT. PLAN AND PROFILES
C-03.27	DESERT SNOW CT. PLAN AND PROFILES
C-03.28-C-03.29	DESERT VISTA AVE. PLAN AND PROFILES
C-03.30-C-03.31	DESERT WOLF AVE. PLAN AND PROFILES
C-03.32-C-03.35	JUSTICE ST. PLAN AND PROFILES
C-03.36-C-03.37	MISCELLANEOUS DETAILS
C-03.38	TYP. RAMP DETAILS
C-03.39	ILLUMINATION PLAN
C-03.40	SIGNAGE PLAN
C-03.41	JUSTICE ST. DEMOLITION AND STREET TRANSITION PLAN
C-04.00-C-04.02	STORM WATER POLLUTION PREVENTION PLANS
C-05.00-C-05.04	WATER LAYOUT
C-05.05-C-05.06	WATER DETAILS
C-05.07-C-05.11	SANITARY SEWER LAYOUT
C-05.12	SANITARY SEWER DETAILS
C-05.13-C-05.48	SANITARY SEWER PLAN AND PROFILES
C-05.49-C-05.52	SEWER LIFT STATION DETAILS
E1.0-E3.0	SEWER LIFT STATION ELECTRICAL DETAILS
P1.0-P4.0	SEWER LIFT STATION SCADA DETAILS
L1-L6	MEDIAN AND PARKWAY LANDSCAPING AND IRRIGATION PLANS
L1-L15	PARKS LANDSCAPING AND IRRIGATION PLANS

**CITY DEVELOPMENT DEPARTMENT**  
 Reviewed For Conformance For Condition Related To:  
 Sidewalks, Grading at Drivage, Wheelchair Ramps, On Site Parking Layout, Easements, Retaining Rock Walls, On Site Ponding of Storm Water.  
 Contractor Must Call 24 Hours Prior To Construction for Inspections  
*E. Garcia* 10/25/2018

**PARKS DEPARTMENT**  
 REVIEWED *Antonio...* 10/25/18

**SLI ENGINEERING, INC.**  
 CIVIL ENGINEERS LAND SURVEYORS LAND PLANNERS  
 6600 WESTWIND EL PASO, TEXAS (915) 584-4457  
 OCTOBER 2018



10-24-18

A PORTION OF SECTION 28, BLOCK 79, TOWNSHIP 2,  
TEXAS AND PACIFIC RAILWAY COMPANY SURVEYS  
BOOK 2884, PAGE 1625

# DESERT SANDS

BEING A PORTION OF SECTIONS 28 AND 33, BLOCK 79,  
TOWNSHIP 2, TEXAS AND PACIFIC RAILWAY COMPANY SURVEYS  
CITY OF EL PASO, EL PASO COUNTY, TEXAS  
CONTAINING: 106.282 ACRES ±

## DEDICATION

STATE OF TEXAS  
COUNTY OF EL PASO

E. P. T. LAND PROPERTIES, OWNER, OF THIS LAND, HEREBY PRESENTS THIS MAP AND DEDICATES TO THE USE OF THE PUBLIC AS HEREON LAID DOWN AND DESIGNATED THE RETENTION PONDS, STREETS, PARKS AND UTILITY EASEMENTS FOR OVERHANG OF SERVICE WIRES, POLE TYPE UTILITIES, BURIED SERVICE WIRES, CONDUITS AND PIPES FOR UNDERGROUND UTILITIES AND THE RIGHT OF INGRESS AND EGRESS FOR SERVICE AND CONSTRUCTION AND THE RIGHT TO TRIM INTERFERING TREES AND SHRUBS.

E. P. T. LAND PROPERTIES, OWNER  
RICHARD AGUILAR, PRESIDENT

## ACKNOWLEDGEMENT

STATE OF TEXAS  
COUNTY OF EL PASO

BEFORE ME THE UNDERSIGNED NOTARY PUBLIC, ON THIS \_\_\_\_\_ DAY OF \_\_\_\_\_, 2018 A.D. PERSONALLY APPEARED KNOWN TO ME TO BE THE PERSON WHOSE NAME IS RICHARD AGUILAR.

NOTARY PUBLIC, STATE OF TEXAS

MY COMMISSION EXPIRES: \_\_\_\_\_

## CITY PLAN COMMISSION

THIS SUBDIVISION IS HEREBY APPROVED AS TO THE PLATTING AND AS TO THE CONDITIONS OF THE DEDICATION IN ACCORDANCE WITH CHAPTER 212 OF THE LOCAL GOVERNMENT CODE OF TEXAS THIS \_\_\_\_\_ DAY OF \_\_\_\_\_, 2018 A.D.

EXECUTIVE SECRETARY \_\_\_\_\_ CHAIRPERSON \_\_\_\_\_

APPROVED FOR FILING THIS \_\_\_\_\_ DAY OF \_\_\_\_\_, 2018 A.D.

PLANNING AND INSPECTIONS DIRECTOR \_\_\_\_\_

## FILING

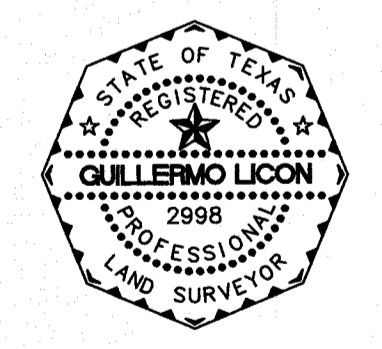
FILED AND RECORDED IN THE OFFICE OF THE COUNTY CLERK OF EL PASO COUNTY, TEXAS, THIS \_\_\_\_\_ DAY OF \_\_\_\_\_, 2018 A.D.

FILE NO. \_\_\_\_\_

COUNTY CLERK \_\_\_\_\_ BY DEPUTY \_\_\_\_\_

THIS PLAT REPRESENTS A SURVEY MADE ON THE GROUND UNDER MY SUPERVISION AND IS IN COMPLIANCE WITH THE CURRENT TEXAS BOARD OF PROFESSIONAL LAND SURVEYING PROFESSIONAL AND TECHNICAL STANDARDS.

GUILLERMO LICON, RPLS 2998

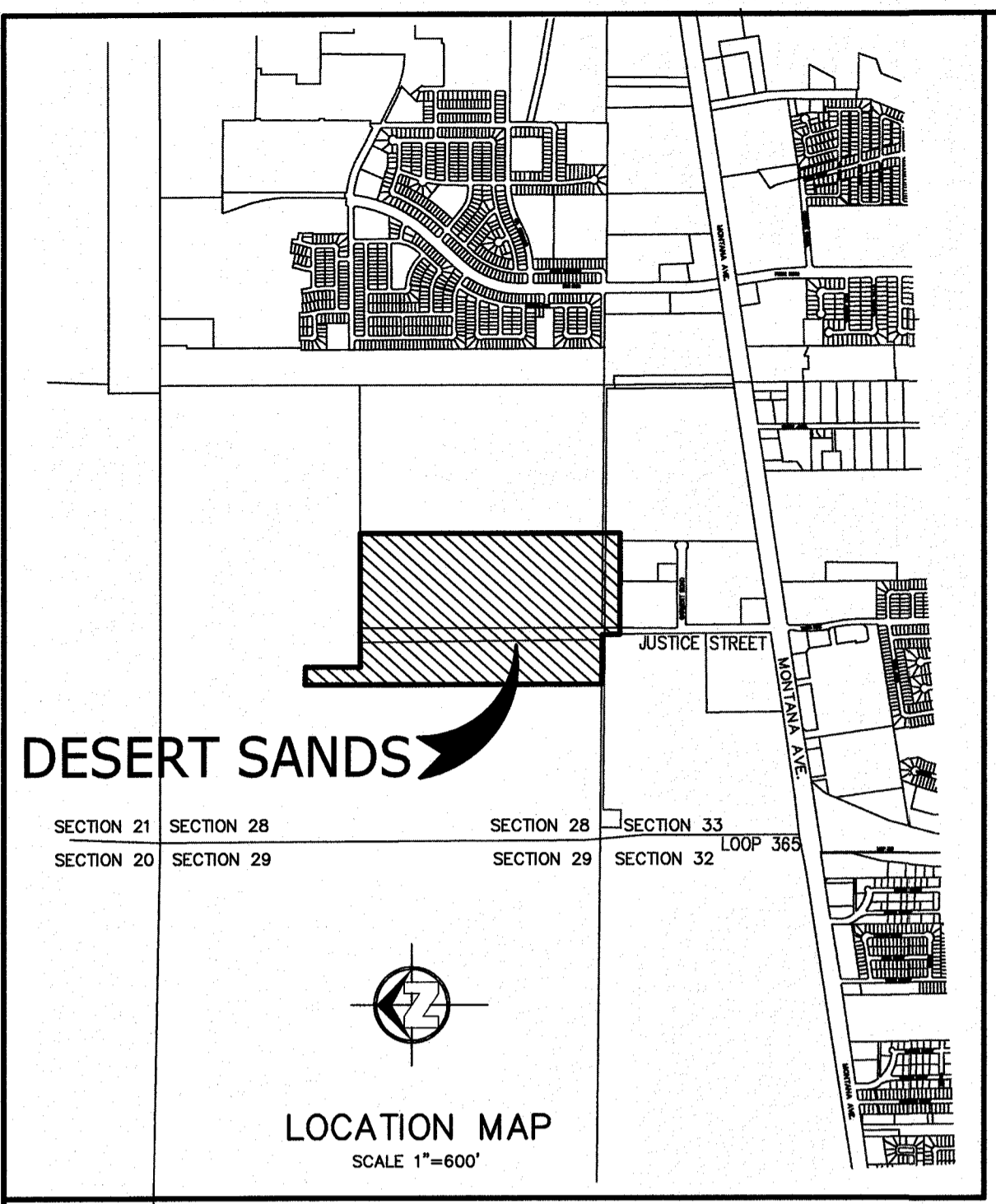
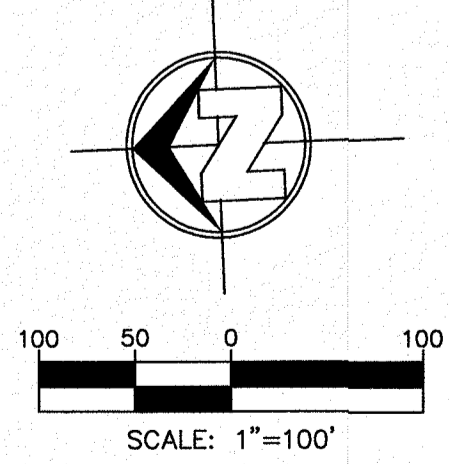


## LEGEND

- PROPOSED CITY MONUMENT
- ① BLOCK NUMBER
- 1 LOT NUMBER



Final Approval



ID	TO	EASEMENTS	DESCRIPTION	DOC #
Ⓞ	DIAMOND SHAMROCK REFINING	100.0' PERPETUAL NON-EXCLUSIVE EASEMENT UNDERGROUND HYDROCARBON LIQUIDS PIPELINES	STATE OF TEXAS ME NO. 940012	
ⓧ	EPWU	20.0' WATERLINE EASEMENT	2999	341

### GENERAL NOTES:

- SET 1/2" IRON WITH SLI CAP STAMPED "TX 2989" ON ALL PROPERTY CORNERS UNLESS OTHERWISE INDICATED.
- BEARINGS ARE GRID AND BASED ON THE STATE PLANE COORDINATE SYSTEM CENTRAL ZONE OF TEXAS 4203 (NAD83). ALL DISTANCES ARE AT GROUND LEVEL.
- THIS SUBDIVISION SHALL PROVIDE FOR POSTAL DELIVERY SERVICE. THE SUBDIVIDER WILL COORDINATE INSTALLATION AND CONSTRUCTION WITH THE UNITED STATES POSTAL SERVICE IN DETERMINING THE TYPE OF DELIVERY SERVICE FOR THE PROPOSED SUBDIVISION. IN ALL CASES, THE TYPE AND LOCATION OF DELIVERY SERVICE SHALL BE SUBJECT TO THE APPROVAL OF THE UNITED STATES POSTAL SERVICE.
- ALL INFORMATION SHOWN HEREON WITH RESPECT TO UNDERGROUND CONDITIONS WAS DETERMINED BY DATA COLLECTED THROUGH SURVEY CREW OBSERVATION AND OTHER INFORMATION TAKEN FROM EXISTING PLANS AND MAPS OF RECORD. NO UNDERGROUND UTILITIES EXISTING OR ABANDONED WERE EXPOSED OR LOCATED.
- UNLESS SPECIFICALLY ACCEPTED BY SLI ENGINEERING, INC. IN WRITING, SLI ENGINEERING, INC. MAKES NO CLAIM, EXPRESSED OR IMPLIED, AS TO THE UNDERGROUND SITE CONDITIONS.
- THIS SUBDIVISION LIES WITHIN THE SOCORRO INDEPENDENT SCHOOL DISTRICT.
- ALL DEVELOPED STORM WATER RUNOFF SHALL BE ADDRESSED WITHIN THE SUBDIVISION AND SHALL COMPLY WITH ALL PROVISIONS OF (DSC 19.19.010A AND DDM.11.1)
- THIS IS TO CERTIFY THAT WATER AND SEWER SERVICES WILL BE PROVIDED TO THIS SUBDIVISION BY THE EL PASO WATER/ PUBLIC SERVICE BOARD IN ACCORDANCE WITH THEIR REGULATIONS AND WITH SECTION 16.343 OF THE TEXAS WATER CODE. WATER AND SEWER SERVICES WILL BE EXTENDED TO THIS SUBDIVISION FROM EXISTING FACILITIES LOCATED ALONG JUSTICE AVE.
- TAX CERTIFICATE FOR THIS SUBDIVISION ARE FILED IN THE OFFICE OF THE COUNTY CLERK, DEED AND RECORD SECTION, INSTRUMENT NO. \_\_\_\_\_ DATE: \_\_\_\_\_
- RESTRICTIVE COVENANTS FOR THIS SUBDIVISION ARE FILED IN THE OFFICE OF THE COUNTY CLERK, DEED AND RECORD SECTION, INSTRUMENT NO. \_\_\_\_\_ DATE: \_\_\_\_\_

### FLOOD ZONE

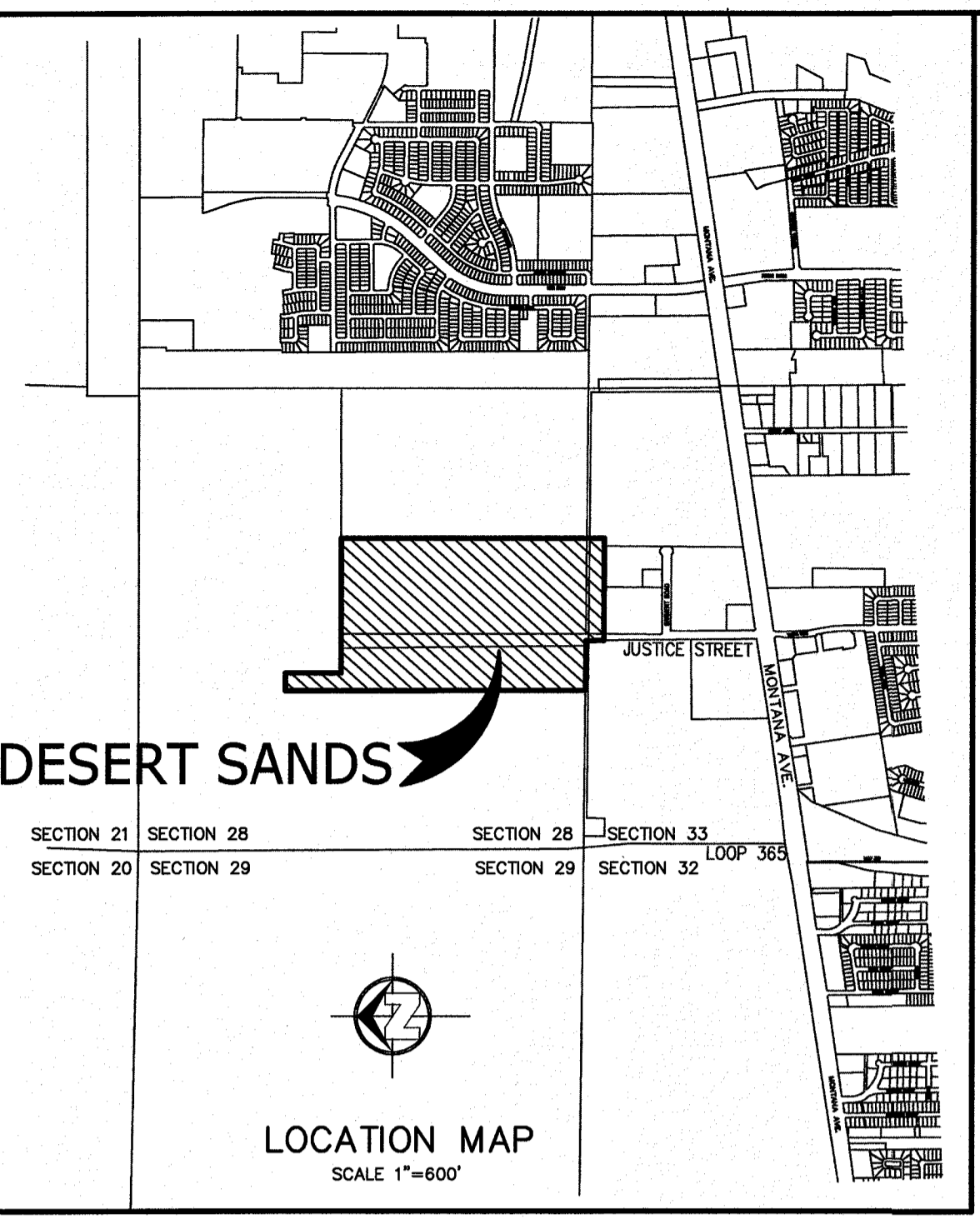
ACCORDING TO THE FEDERAL EMERGENCY MANAGEMENT AGENCY FLOOD INSURANCE RATE MAP COMMUNITY-PANEL NUMBER 480212 0175 B, DATED SEPTEMBER 4, 1991 THIS PROPERTY LIES IN FLOOD ZONE "X".  
ZONE "X", AREAS OF MINIMAL FLOODING.

NUMBER OF LOTS
RESIDENTIAL = 514
PUBLIC PARKS = 2
PONDS = 2
FUTURE PUBLIC R.O.W. = 1

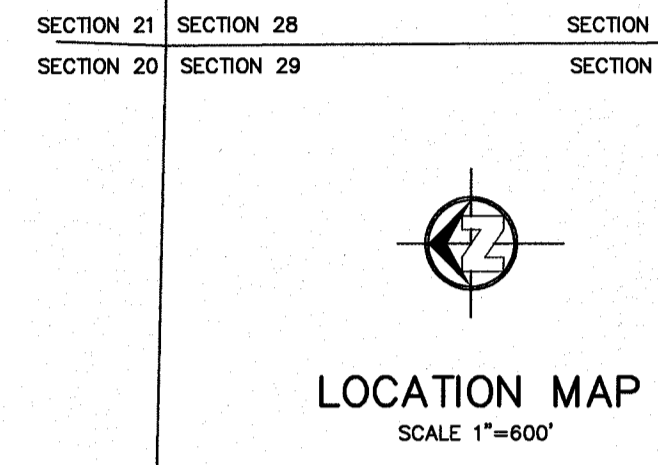
SLI ENGINEERING, INC.  
CIVIL ENGINEERS - LAND SURVEYORS  
LAND PLANNERS - CONSTRUCTION MANAGEMENT  
6600 WESTWIND DR. - EL PASO, TEXAS - 79912 - (915) 584-4457  
DATE OF PREPARATION 07/09/18

# DESERT SANDS

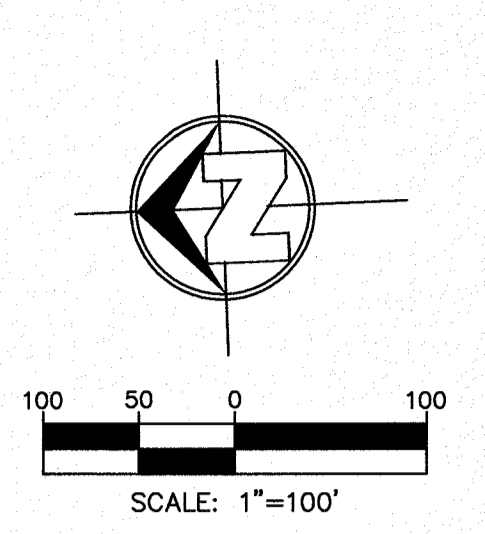
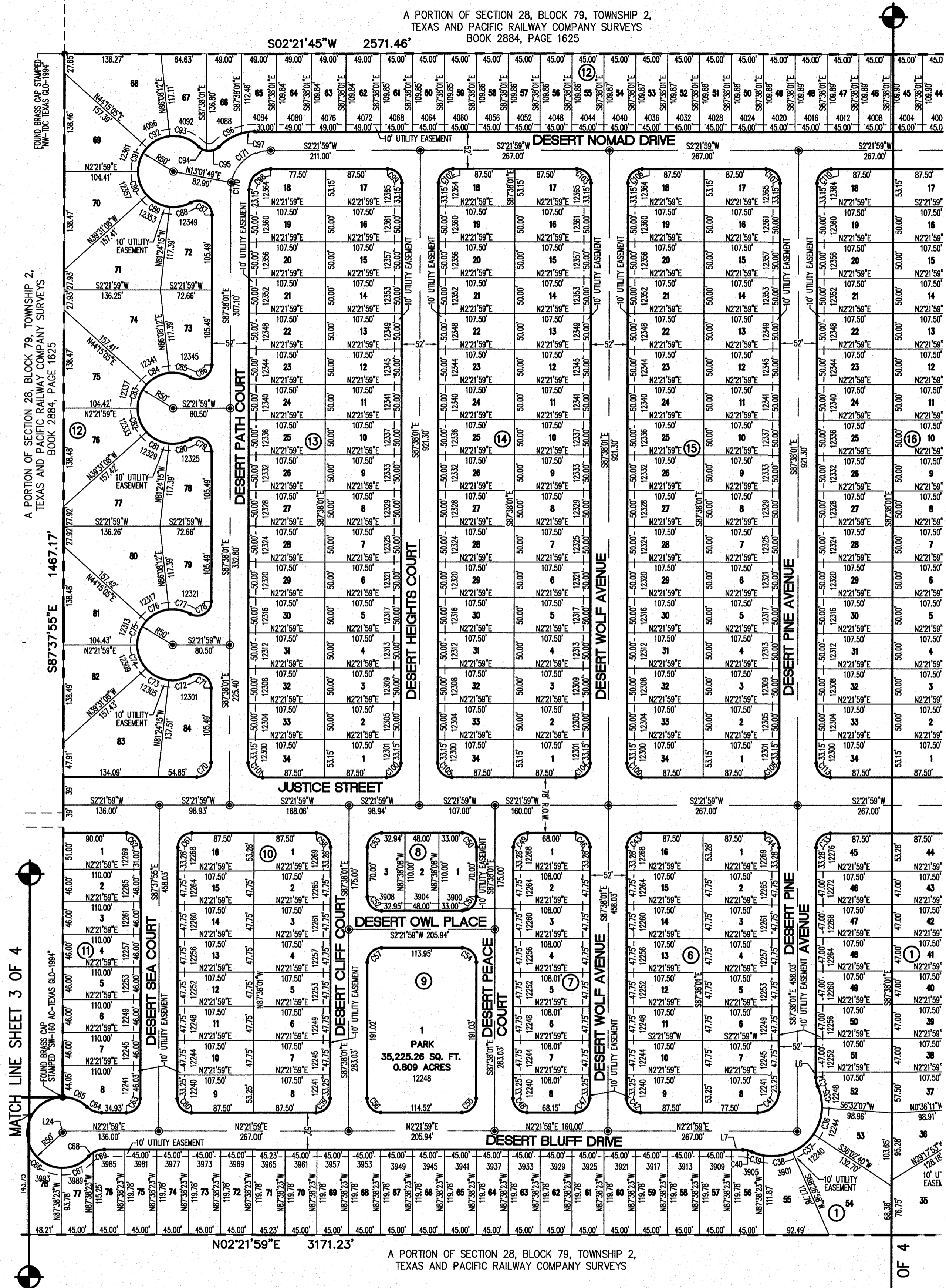
BEING A PORTION OF SECTIONS 28 AND 33, BLOCK 79, TOWNSHIP 2, TEXAS AND PACIFIC RAILWAY COMPANY SURVEYS CITY OF EL PASO, EL PASO COUNTY, TEXAS CONTAINING: 106.282 ACRES ±



## DESERT SANDS



ID	TO	DESCRIPTION	DOC #
⊙	DIAMOND SHAMROCK REFINING	100.0' PERPETUAL NON-EXCLUSIVE EASEMENT UNDERGROUND HYDROCARBON LIQUIDS PIPELINES	STATE OF TEXAS ME NO. 940012
⊗	EPWU	20.0' WATERLINE EASEMENT	2999 341



LEGEND	
⊙	PROPOSED CITY MONUMENT
①	BLOCK NUMBER
1	LOT NUMBER

### ACKNOWLEDGEMENT

STATE OF TEXAS  
 COUNTY OF EL PASO  
 BEFORE ME THE UNDERSIGNED NOTARY PUBLIC, ON THIS \_\_\_\_\_ DAY OF \_\_\_\_\_ 2018 A.D. PERSONALLY APPEARED KNOWN TO ME TO BE THE PERSON WHOSE NAME IS RICHARD AGUILAR.

NOTARY PUBLIC, STATE OF TEXAS \_\_\_\_\_

MY COMMISSION EXPIRES: \_\_\_\_\_

\_\_\_\_\_  
 COUNTY CLERK BY DEPUTY

THIS PLAT REPRESENTS A SURVEY MADE ON THE GROUND UNDER MY SUPERVISION AND IS IN COMPLIANCE WITH THE CURRENT TEXAS BOARD OF PROFESSIONAL LAND SURVEYING PROFESSIONAL AND TECHNICAL STANDARDS.

GUILERMO LICON, RPLS 2998

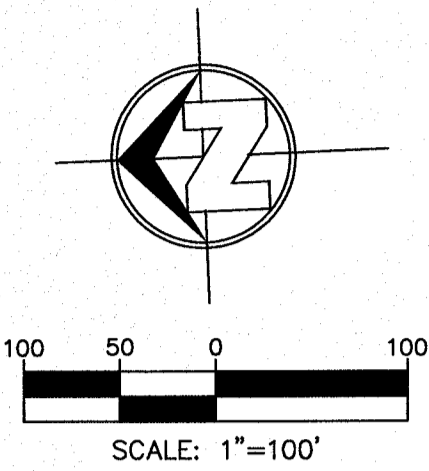


SLI ENGINEERING, INC.  
 CIVIL ENGINEERS - LAND SURVEYORS  
 LAND PLANNERS - CONSTRUCTION MANAGEMENT  
 6600 WESTWIND DR. - EL PASO, TEXAS - 79912 - (915) 584-4457  
 DATE OF PREPARATION 07/09/18



# DESERT SANDS

BEING A PORTION OF SECTIONS 28 AND 33, BLOCK 79,  
TOWNSHIP 2, TEXAS AND PACIFIC RAILWAY COMPANY SURVEYS  
CITY OF EL PASO, EL PASO COUNTY, TEXAS  
CONTAINING: 106.282 ACRES ±



LEGEND	
	PROPOSED CITY MONUMENT
	BLOCK NUMBER
	LOT NUMBER

CURVE TABLE						
CURVE	RADIUS	LENGTH	TANGENT	CHORD	BEARING	DELTA
C1	20.00'	31.42'	20.00'	28.28'	N42°38'01"W	90°00'00"
C2	30.00'	12.69'	6.44'	12.60'	S80°14'40"W	24°14'38"
C3	70.00'	33.37'	17.01'	33.06'	N81°46'47"E	27°18'53"
C4	70.00'	35.07'	17.91'	34.70'	S70°12'40"E	28°42'13"
C5	70.00'	35.07'	17.91'	34.70'	S41°30'27"E	28°42'13"
C6	70.00'	37.72'	19.33'	37.26'	S11°43'08"E	30°52'24"
C7	70.00'	28.27'	14.33'	28.08'	S15°17'21"W	23°08'36"
C8	30.00'	12.83'	6.51'	12.73'	N14°36'49"E	24°29'41"
C9	30.00'	47.12'	30.00'	42.43'	S42°38'01"E	90°00'00"
C10	20.00'	31.42'	20.00'	28.28'	S47°21'59"W	90°00'00"
C11	20.00'	31.42'	20.00'	28.28'	N42°38'01"W	90°00'00"
C12	20.00'	31.42'	20.00'	28.28'	N47°21'59"E	90°00'00"
C13	20.00'	31.42'	20.00'	28.28'	S42°38'01"E	90°00'00"
C14	20.00'	31.42'	20.00'	28.28'	S47°21'59"W	90°00'00"
C15	20.00'	31.42'	20.00'	28.28'	N42°38'01"W	90°00'00"
C16	20.00'	31.42'	20.00'	28.28'	N47°21'59"E	90°00'00"
C17	20.00'	31.42'	20.00'	28.28'	S42°38'01"E	90°00'00"
C18	20.00'	31.42'	20.00'	28.28'	S47°21'59"W	90°00'00"
C19	20.00'	31.42'	20.00'	28.28'	N42°38'01"W	90°00'00"
C20	20.00'	31.42'	20.00'	28.28'	N47°21'59"E	90°00'00"

CURVE TABLE						
CURVE	RADIUS	LENGTH	TANGENT	CHORD	BEARING	DELTA
C21	20.00'	31.42'	20.00'	28.28'	S42°38'01"E	90°00'00"
C22	30.00'	47.12'	30.00'	42.43'	S47°21'59"W	90°00'00"
C23	20.00'	31.42'	20.00'	28.28'	N42°38'01"W	90°00'00"
C24	20.00'	31.42'	20.00'	28.28'	N47°21'59"E	90°00'00"
C25	30.00'	12.83'	6.51'	12.73'	N9°52'52"W	24°29'41"
C26	70.00'	26.94'	13.64'	26.77'	S11°06'15"E	22°02'54"
C27	70.00'	37.13'	19.01'	36.70'	S15°06'55"W	30°23'28"
C28	70.00'	37.13'	19.01'	36.70'	S45°30'23"W	30°23'28"
C29	70.00'	35.06'	17.90'	34.69'	S75°02'58"W	28°41'42"
C30	70.00'	33.25'	16.94'	32.94'	N76°59'47"W	27°12'48"
C31	30.00'	12.69'	6.44'	12.60'	S75°30'42"E	24°14'38"
C32	20.00'	31.42'	20.00'	28.28'	N47°21'59"E	90°00'00"
C33	20.00'	31.42'	20.00'	28.28'	N42°38'01"W	90°00'00"
C34	30.00'	12.69'	6.44'	12.60'	S80°14'40"W	24°14'38"
C35	70.00'	31.18'	15.85'	30.92'	N80°52'52"E	25°31'02"
C36	70.00'	39.59'	20.34'	39.06'	S70°09'28"E	32°24'18"
C37	70.00'	39.59'	20.34'	39.06'	S42°38'01"E	32°24'18"
C38	70.00'	41.62'	21.44'	41.01'	S4°31'08"E	34°03'46"
C39	70.00'	17.53'	8.81'	17.48'	S19°41'12"W	14°20'54"
C40	30.00'	12.83'	6.51'	12.73'	N14°36'49"E	24°29'41"

CURVE TABLE						
CURVE	RADIUS	LENGTH	TANGENT	CHORD	BEARING	DELTA
C41	30.00'	47.12'	30.00'	42.43'	S42°38'01"E	90°00'00"
C43	20.00'	31.42'	20.00'	28.28'	N42°38'01"W	90°00'00"
C44	20.00'	31.42'	20.00'	28.28'	N47°21'59"E	90°00'00"
C46	20.00'	31.42'	20.00'	28.28'	S47°21'55"W	89°59'54"
C47	20.00'	31.43'	20.01'	28.29'	N42°37'01"W	90°02'13"
C48	19.84'	31.33'	20.00'	28.17'	N47°35'27"E	90°26'56"
C49	20.00'	31.42'	20.00'	28.28'	S42°38'01"E	90°00'00"
C50	20.00'	31.42'	20.00'	28.28'	S47°21'55"W	89°59'54"
C51	20.00'	31.42'	20.00'	28.28'	N42°38'05"W	90°00'06"
C52	20.00'	31.42'	20.00'	28.28'	N47°21'59"E	89°59'42"
C53	20.00'	31.42'	20.00'	28.28'	S42°38'01"E	90°00'00"
C54	20.00'	31.42'	20.00'	28.28'	S47°21'55"W	89°59'54"
C55	20.00'	31.42'	20.00'	28.29'	N42°38'08"W	90°00'00"
C56	20.01'	30.86'	19.45'	27.89'	N48°10'25"E	88°21'38"
C57	20.00'	31.42'	20.00'	28.28'	S42°38'01"E	89°59'33"
C58	20.00'	31.42'	20.00'	28.28'	S47°21'59"W	90°00'00"
C59	20.00'	31.42'	20.00'	28.28'	N42°38'01"W	90°00'00"
C60	20.00'	31.42'	20.00'	28.28'	N47°21'59"E	90°00'00"
C61	20.00'	31.42'	20.00'	28.28'	S42°38'01"E	90°00'00"
C62	20.00'	31.42'	20.00'	28.28'	S47°22'02"W	90°00'06"

CURVE TABLE						
CURVE	RADIUS	LENGTH	TANGENT	CHORD	BEARING	DELTA
C63	20.00'	31.42'	20.00'	28.28'	N42°37'58"W	89°59'54"
C64	30.00'	22.78'	11.97'	22.23'	N24°07'02"E	43°30'06"
C65	50.00'	37.96'	19.95'	37.06'	N24°07'02"E	43°30'05"
C66	50.00'	76.74'	48.23'	69.43'	S48°23'46"W	87°56'10"
C67	50.00'	43.31'	23.12'	41.97'	S20°32'22"E	49°38'06"
C68	30.00'	8.21'	4.13'	8.18'	S37°22'10"E	15°40'30"
C69	30.00'	16.70'	8.57'	16.49'	S13°34'58"E	31°53'54"
C70	20.00'	31.42'	20.00'	28.28'	S42°38'01"E	90°00'00"
C71	20.00'	41.72'	34.31'	34.56'	N32°36'08"E	119°31'41"
C72	50.00'	31.20'	16.13'	30.70'	S9°16'59"E	35°45'28"
C73	50.00'	36.55'	19.14'	35.74'	S29°32'19"W	41°53'07"
C74	50.00'	36.55'	19.14'	35.74'	S71°25'25"W	41°53'07"
C75	50.00'	36.55'	19.14'	35.74'	N66°41'28"W	41°53'07"
C76	50.00'	36.55'	19.14'	35.74'	N24°48'21"W	41°53'07"
C77	50.00'	31.20'	16.13'	30.70'	N14°00'56"E	35°45'28"
C78	20.00'	41.72'	34.31'	34.56'	S27°52'11"E	119°31'41"
C79	20.00'	41.72'	34.31'	34.56'	N32°36'08"E	119°31'41"
C80	50.00'	31.20'	16.13'	30.70'	S9°16'59"E	35°45'28"
C81	50.00'	36.55'	19.14'	35.74'	S29°32'19"W	41°53'07"
C82	50.00'	36.55'	19.14'	35.74'	S71°25'25"W	41°53'07"

CURVE TABLE						
CURVE	RADIUS	LENGTH	TANGENT	CHORD	BEARING	DELTA
C83	50.00'	36.55'	19.14'	35.74'	N66°41'28"W	41°53'07"
C84	50.00'	36.55'	19.14'	35.74'	N24°48'21"W	41°53'07"
C85	50.00'	31.20'	16.13'	30.70'	N14°00'56"E	35°45'28"
C86	20.00'	41.72'	34.31'	34.56'	S27°52'11"E	119°31'41"
C87	20.00'	41.72'	34.31'	34.56'	N32°36'08"E	119°31'41"
C88	50.00'	31.20'	16.13'	30.70'	S9°16'59"E	35°45'28"
C89	50.00'	36.55'	19.14'	35.74'	S29°32'19"W	41°53'07"
C90	50.00'	36.55'	19.14'	35.74'	S71°25'25"W	41°53'07"
C91	50.00'	36.55'	19.14'	35.74'	N66°41'28"W	41°53'07"
C92	50.00'	36.55'	19.14'	35.74'	N24°48'21"W	41°53'07"
C93	50.00'	45.18'	24.26'	43.66'	N22°01'20"E	51°46'17"
C94	20.00'	12.42'	6.42'	12.22'	S30°07'25"W	35°34'08"
C95	20.00'	19.47'	10.59'	18.71'	S15°33'14"E	55°47'10"
C96	70.00'	36.73'	18.80'	36.31'	N28°24'54"W	30°03'50"
C97	70.00'	19.24'	9.68'	19.18'	N5°30'30"W	15°44'57"
C98	30.00'	47.12'	30.00'	42.43'	N42°38'01"W	90°00'00"
C99	20.00'	31.42'	20.00'	28.28'	N47°21'59"E	90°00'00"
C100	20.00'	31.42'	20.00'	28.28'	S42°38'01"E	90°00'00"
C101	20.00'	31.42'	20.00'	28.28'	S47°21'59"W	90°00'00"
C102	20.00'	31.42'	20.00'	28.28'	N42°38'01"W	90°00'00"

CURVE TABLE						
CURVE	RADIUS	LENGTH	TANGENT	CHORD	BEARING	DELTA
C103	20.00'	31.42'	20.00'	28.28'	N47°21'59"E	90°00'00"
C104	20.00'	31.42'	20.00'	28.28'	S42°38'01"E	90°00'00"
C105	20.00'	31.42'	20.00'	28.28'	S47°21'59"W	90°00'00"
C106	20.00'	31.42'	20.00'	28.28'	N42°38'01"W	90°00'00"
C107	20.00'	31.42'	20.00'	28.28'	N47°21'59"E	90°00'00"
C108	20.00'	31.42'	20.00'	28.28'	S42°38'01"E	90°00'00"
C109	20.00'	31.42'	20.00'	28.28'	S47°21'59"W	90°00'00"
C110	20.00'	31.42'	20.00'	28.28'	N42°38'01"W	90°00'00"
C111	20.00'	31.42'	20.00'	28.28'	N47°21'59"E	90°00'00"
C112	20.00'	31.42'	20.00'	28.28'	S42°38'01"E	90°00'00"
C113	20.00'	31.42'	20.00'	28.28'	S47°21'59"W	90°00'00"
C114	20.00'	31.42'	20.00'	28.28'	S47°21'59"W	90°00'00"
C115	20.00'	31.42'	20.00'	28.28'	N42°38'01"W	90°00'00"
C116	20.00'	31.42'	20.00'	28.28'	N47°21'59"E	90°00'00"
C117	20.00'	31.42'	20.00'	28.28'	S42°38'01"E	90°00'00"
C118	20.00'	31.42'	20.00'	28.28'	S47°21'59"W	90°00'00"
C119	20.00'	31.42'	20.00'	28.28'	N42°38'01"W	90°00'00"
C120	20.00'	31.42'	20.00'	28.28'	N47°21'59"E	90°00'00"
C121	20.00'	31.42'	20.00'	28.28'	S42°38'01"E	90°00'00"
C122	20.00'	31.42'	20.00'	28.28'	S47°21'59"W	90°00'00"

CURVE TABLE						
CURVE	RADIUS	LENGTH	TANGENT	CHORD	BEARING	DELTA
C123	20.00'	31.42'	20.00'	28.28'	N42°38'01"W	90°00'00"
C124	20.00'	31.42'	20.00'	28.28'	N47°21'59"E	90°00'00"
C125	20.00'	31.42'	20.00'	28.28'	S42°38'01"E	90°00'00"
C126	20.00'	31.42'	20.00'	28.28'	N42°38'01"W	90°00'00"
C127	20.00'	31.42'	20.00'	28.28'	N47°21'59"E	90°00'00"
C128	20.00'	31.42'	20.00'	28.28'	S42°38'01"E	90°00'00"
C129	20.00'	31.42'	20.00'	28.28'	S47°21'59"W	90°00'00"
C130	20.00'	31.42'	20.00'	28.28'	N42°38'01"W	90°00'00"
C131	30.00'	47.12'	30.00'	42.43'	N47°21'59"E	90°00'00"
C132	20.00'	31.42'	20.00'	28.28'	S42°38'01"E	90°00'00"
C133	20.00'	31.42'	20.00'	28.28'	S47°21'59"W	90°00'00"
C134	30.00'	2.62'	1.31'	2.62'	S0°08'13"E	5°00'24"
C135	30.00'	7.37'	3.71'	7.36'	S9°40'57"E	14°05'04"
C136	70.00'	40.06'	20.59'	39.51'	N0°19'53"W	32°47'13"
C137	70.00'	39.50'	20.29'	38.98'	N32°13'44"E	32°20'00"
C138	70.00'	39.50'	20.29'	38.98'	N64°33'44"E	32°20'00"
C139	70.00'	38.36'	19.67'	37.88'	S83°34'19"E	31°23'54"
C140	30.00'	10.35'	5.23'	10.30'	N77°45'12"W	19°45'40"
C141	20.00'	31.42'	20.00'	28.28'	S47°21'59"W	90°00'00"
C142	20.00'	31.42'	20.00'	28.28'	S42°	

